



Università
degli Studi
di Ferrara

Dipartimento Studi Umanistici

PHD OPEN DAY

**SCIENZE
UMANE**

**SOSTENIBILITÀ AMBIENTALE
E BENESSERE**

The PhD EXPERIENCE

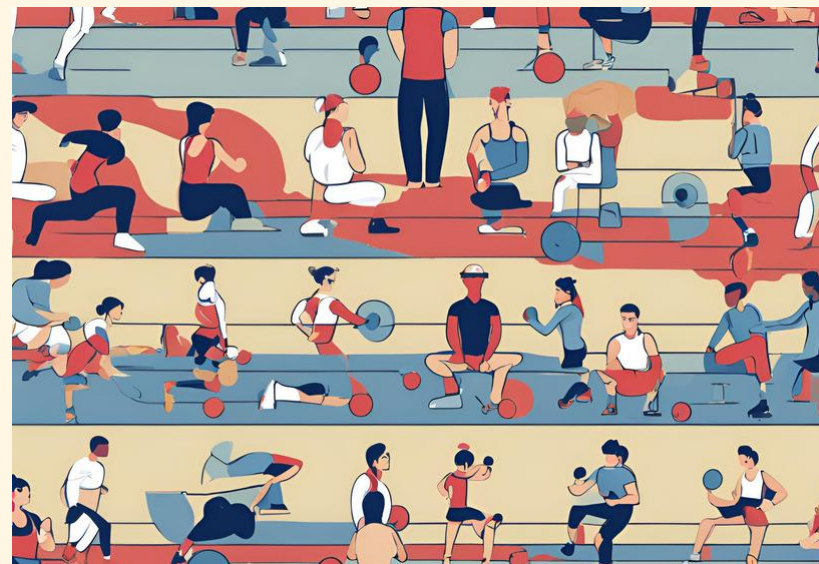
Pursuing a PhD is essential for developing advanced expertise, critical thinking, and research skills, enabling you to contribute original knowledge and solutions to complex global challenge



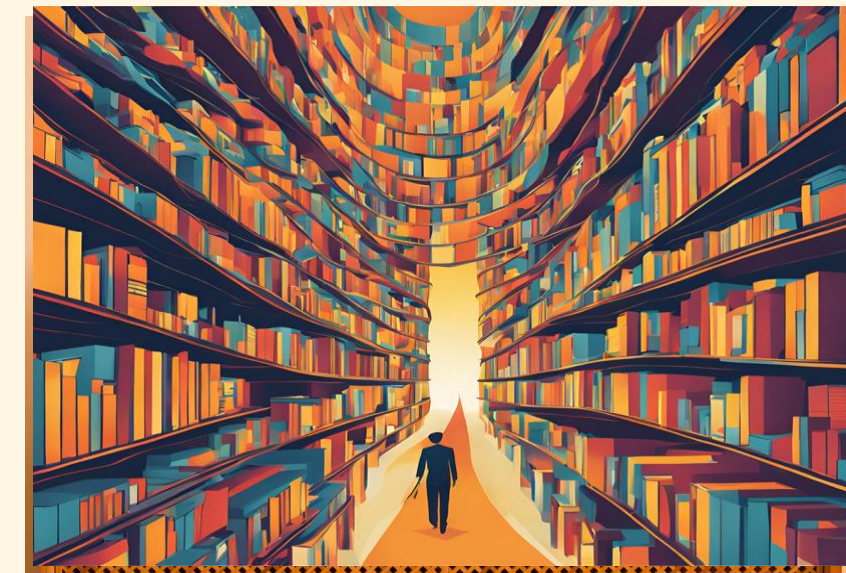
Interdisciplinary Research Environment



Global Opportunities



Personalised Training



Cutting-Edge Resources

PHD PROGRAMME IN Environmental Sustainability and Wellbeing



The innovative PhD programme in Environmental Sustainability and Wellbeing is **interdisciplinary**, **intersectoral** and **international**.

Sustainability has been studied with diverse methods in various disciplines. The aim of this PhD programme is to train researchers who, starting from their specific background, will acquire interdisciplinary and integrated methodologies allowing them to understand, manage and enhance the sustainability of the environment in relation to the wellbeing of living organisms.





TRAINING

The training is based on the synergy of four macro-areas

01 Humanities and Social Sciences


02 Economics and Law

03 Architecture, Urban Planning and Engineering

04 Life, Chemical and Biomedical Sciences

Research Projects **TEACHING ACTIVITIES**

The interdisciplinary framework of the PhD programme in Environmental Sustainability and Wellbeing requires that each research project intersects with **at least 2** among these macro-areas:



Humanities and Social
Sciences

Economics and Law

Architecture, Urban
Planning and Engineering

Life, Chemical and
Biomedical Sciences


Research Projects **TEACHING ACTIVITIES**

Activities for all students are characterized by the participation of national and international scholars and scientists, who are members as well as guests of the PhD programme, and include:



Research Projects **TEACHING ACTIVITIES**

Activities for all students are characterized by the participation of national and international scholars and scientists, who are members as well as guests of the PhD programme, and include:



an intensive cycle of seminars, workshops and lectures at the beginning of the programme, in the month of November

a series of seminars and workshops from December to May

a one-week intensive module on multimedia communication skills

INFO

Prof.ssa Elisa Bolchi
Elisa.bolchi@unife.it

<https://sites.google.com/unife.it/phd-esw>



PhD Programme **HUMANITIES**

The PhD program in Human Sciences serves as a catalyst among various academic disciplines, enabling doctoral candidates to conduct their research within a strongly interdisciplinary environment that fosters a broad-based research education



Prehistory and History

The curriculum centers on the study of human evolution, environments, and cultures from a diachronic perspective. By delving into multiple disciplines—such as anthropology, archaeology, geology, paleobotany, paleontology, ancient and modern history, the history of science, and epistemology—doctoral candidates can integrate theoretical and experimental approaches (including access to numerous laboratories and archaeological sites led by faculty members).



Signs, Texts, and Interpretations

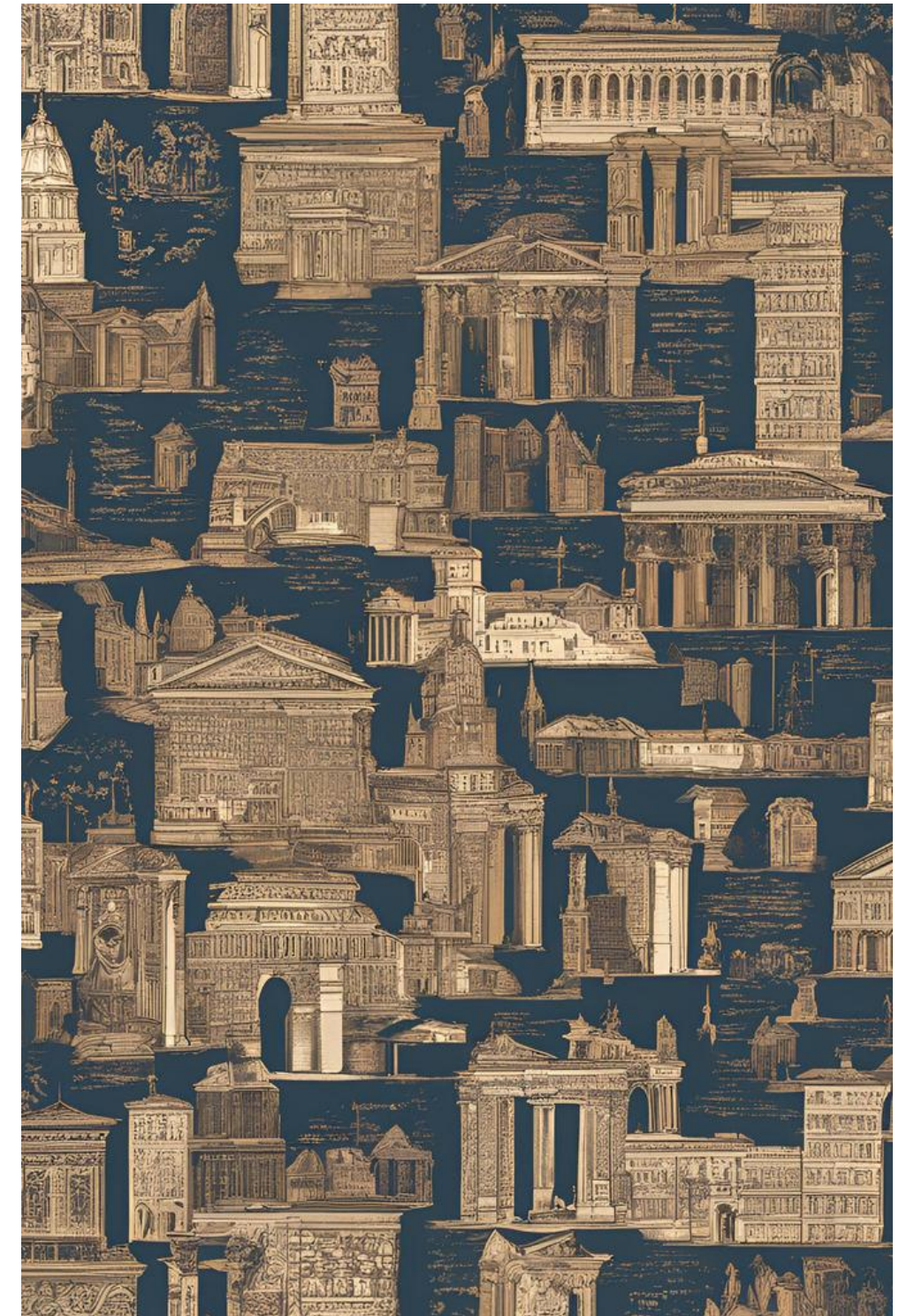
The curriculum focuses on building interdisciplinary knowledge for analyzing language and other sign systems, as well as interpreting texts and signs from different languages and historical periods. It draws on tools and methodologies from literary history and theory, linguistics, philology, the arts and performing arts, aesthetics, philosophy, anthropology, epistemology, education sciences, and philosophy of law.



INFO

Prof.ssa Marta Arzarello
marta.arzarello@unife.it

<https://sites.google.com/unife.it/scienze-umane/home>



**THANKS
FOR YOUR
ATTENTION**

<https://www.unife.it/it/ateneo/strutture-uffici/uffici/ufficio-iuss>



Any question?